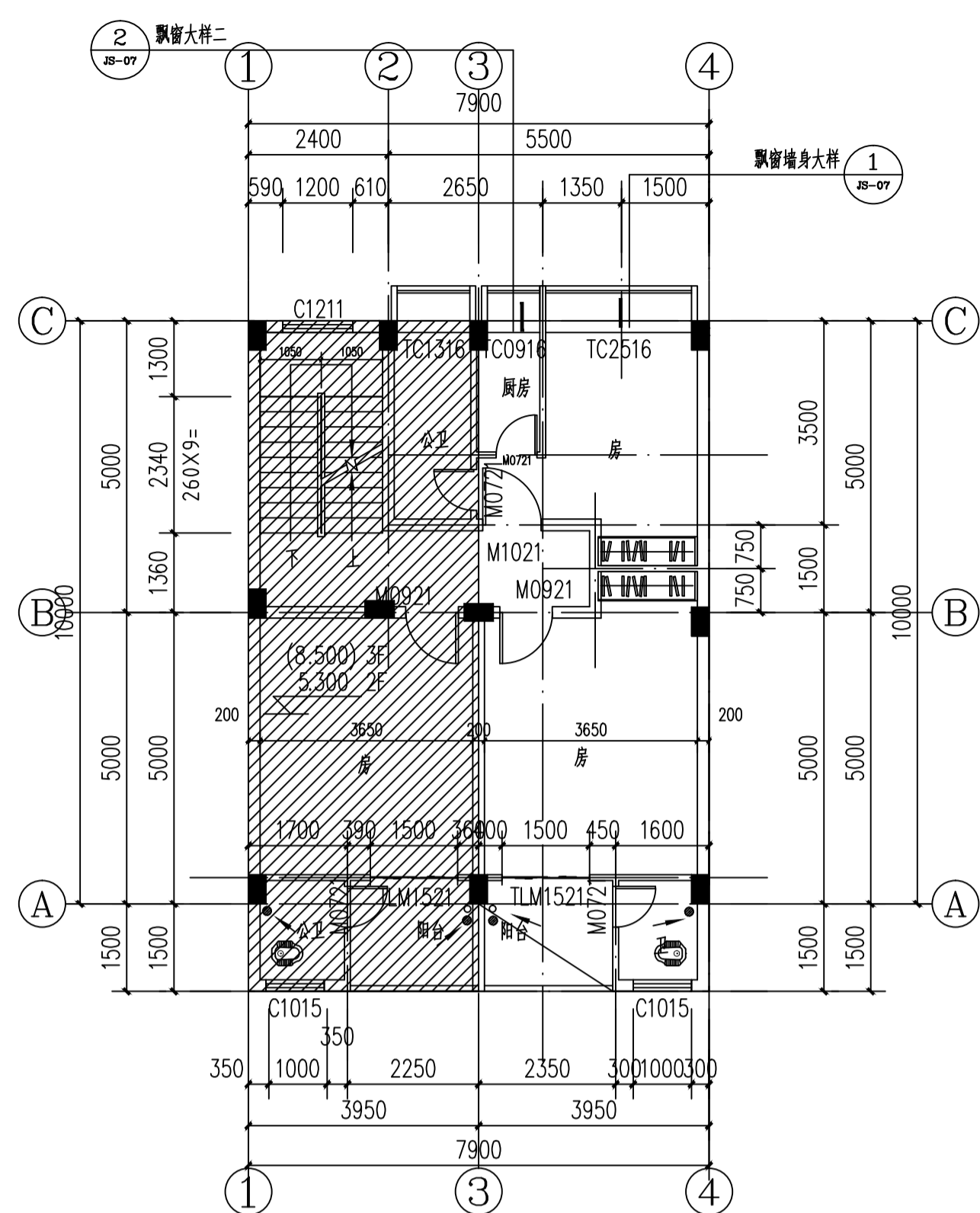
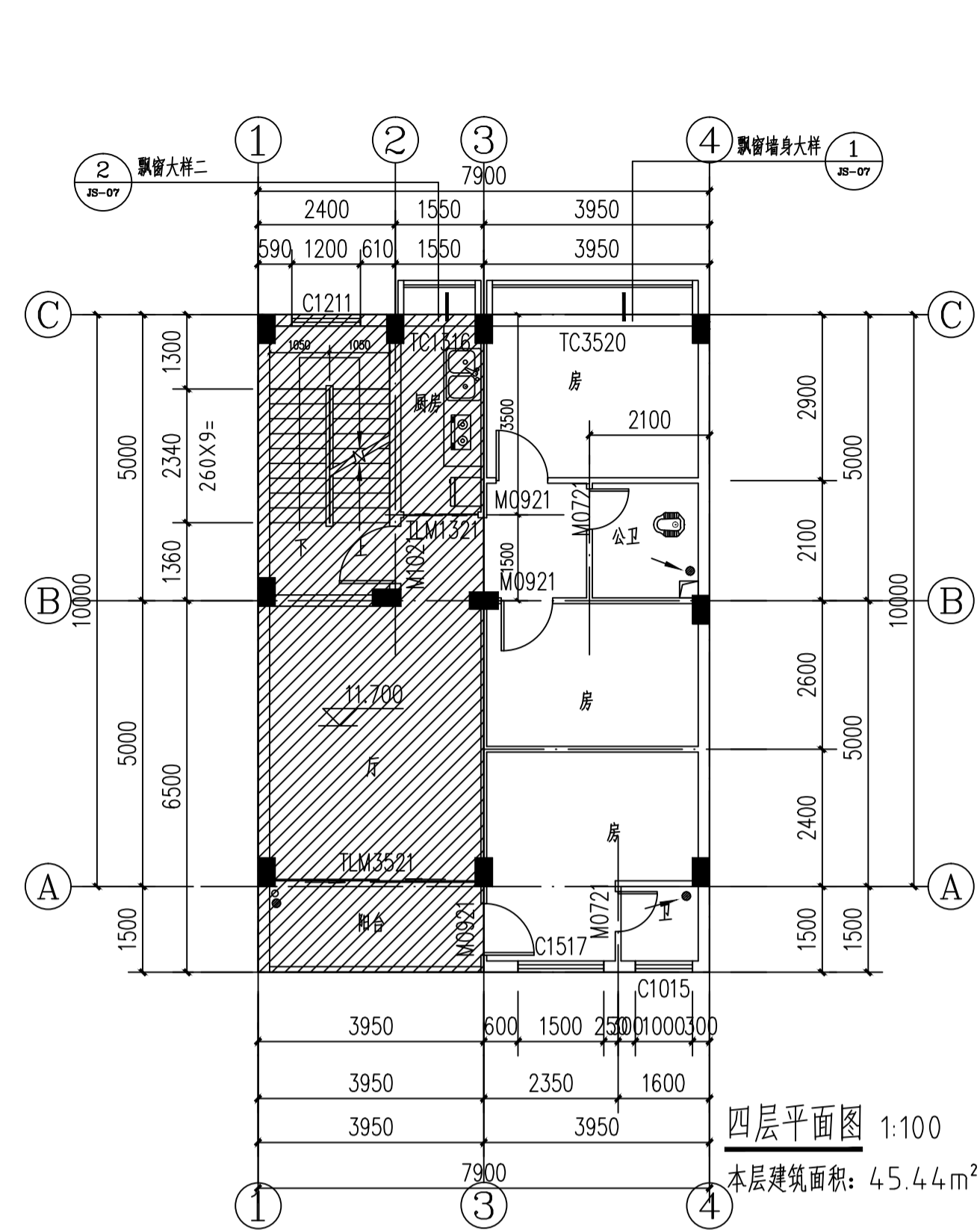


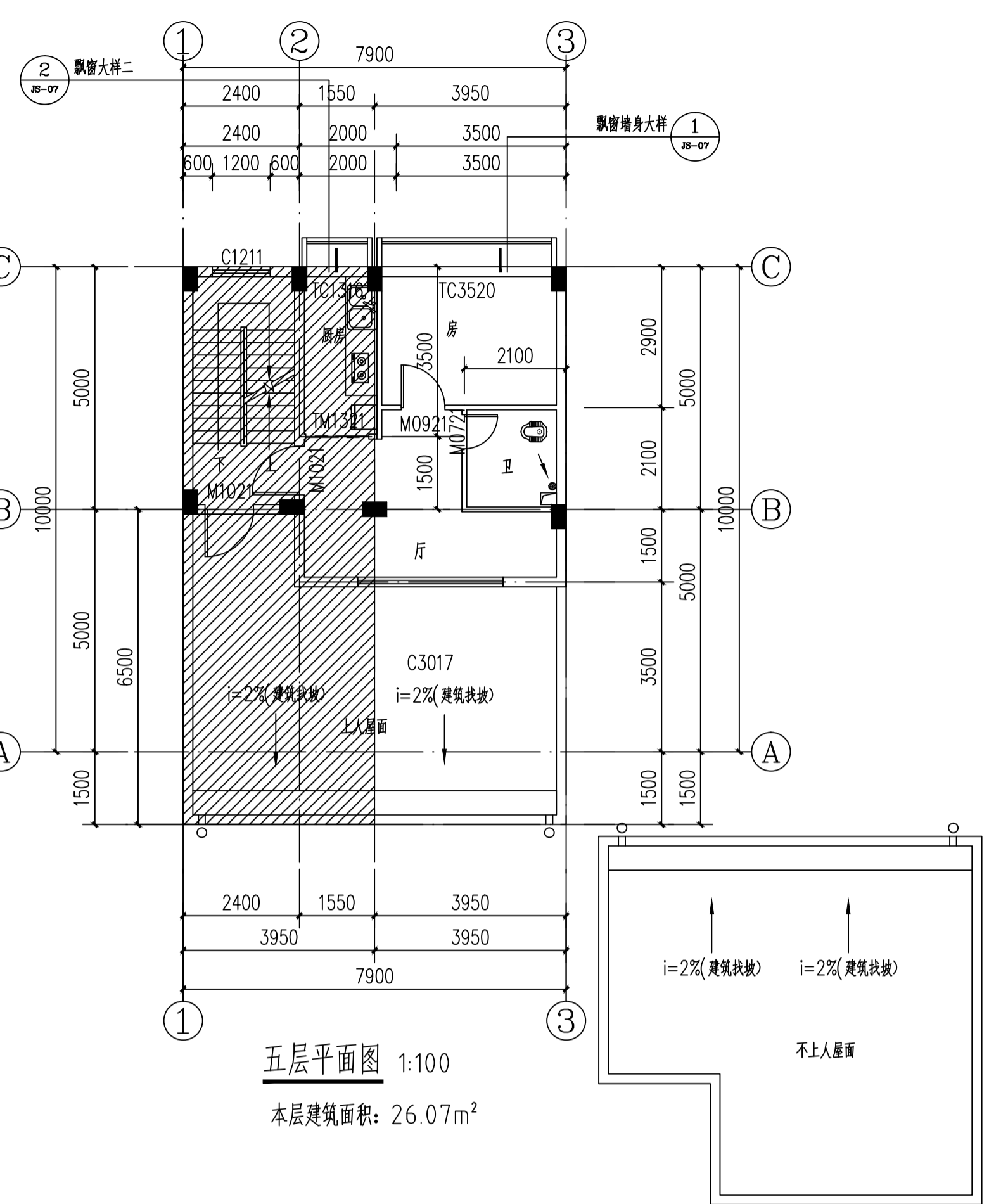
首层平面图 1:100  
±0.000  
本层建筑面积: 39.50m<sup>2</sup>  
总建筑面积: 198.41m<sup>2</sup>



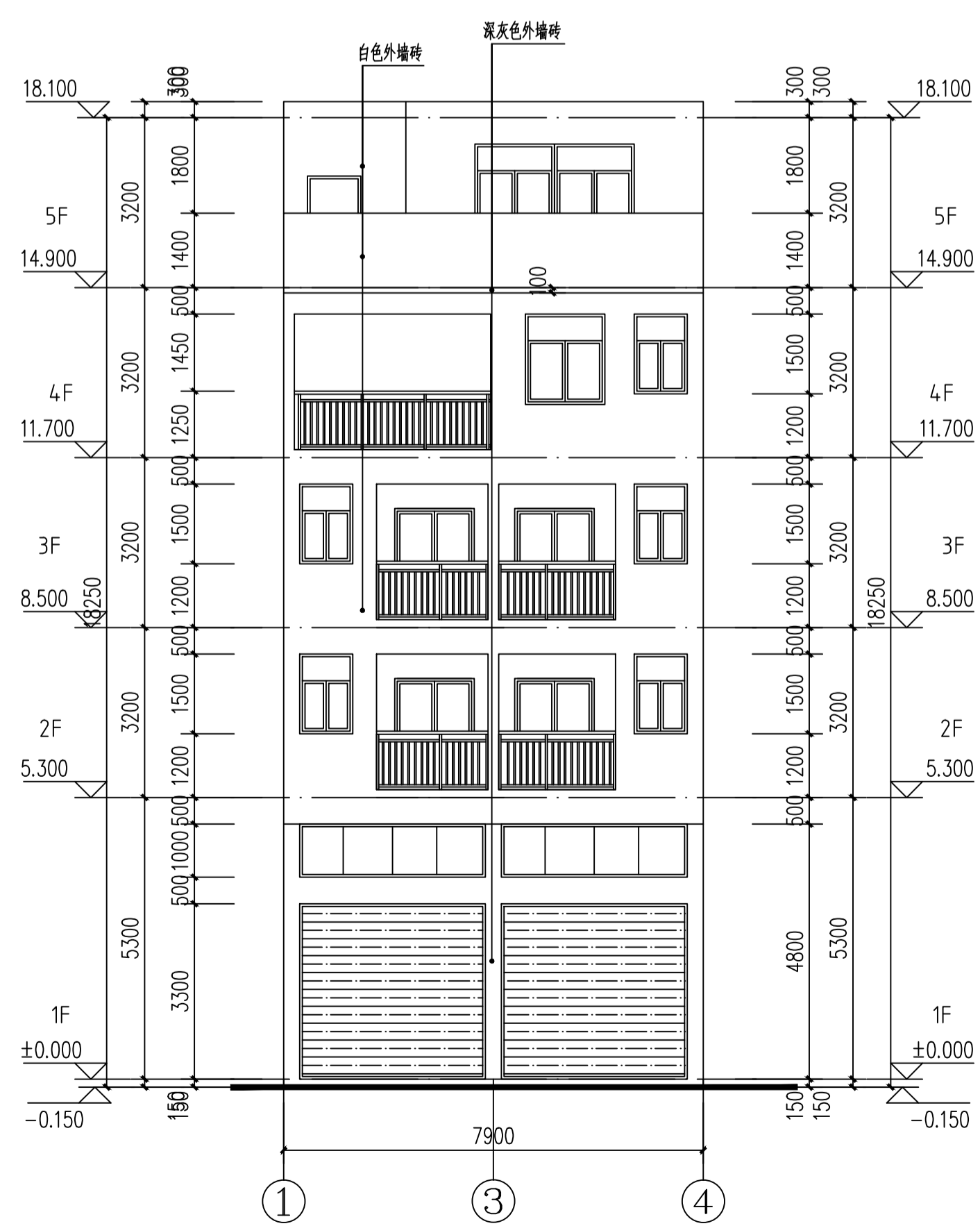
二~三层平面图 1:100  
(8.500) 3F  
(5.300) 2F  
本层建筑面积: 43.7m<sup>2</sup>



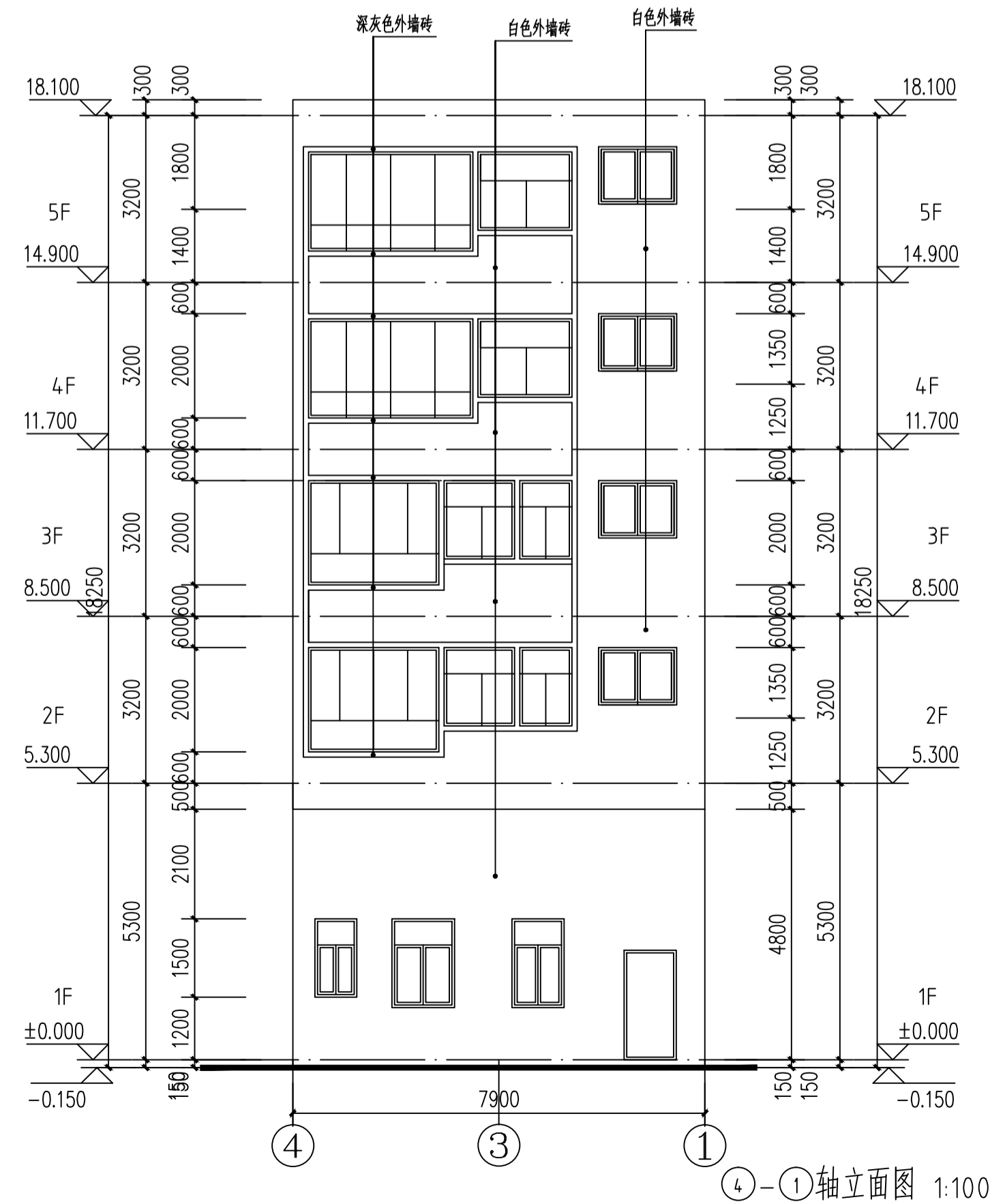
四层平面图 1:100  
本层建筑面积: 45.44m<sup>2</sup>



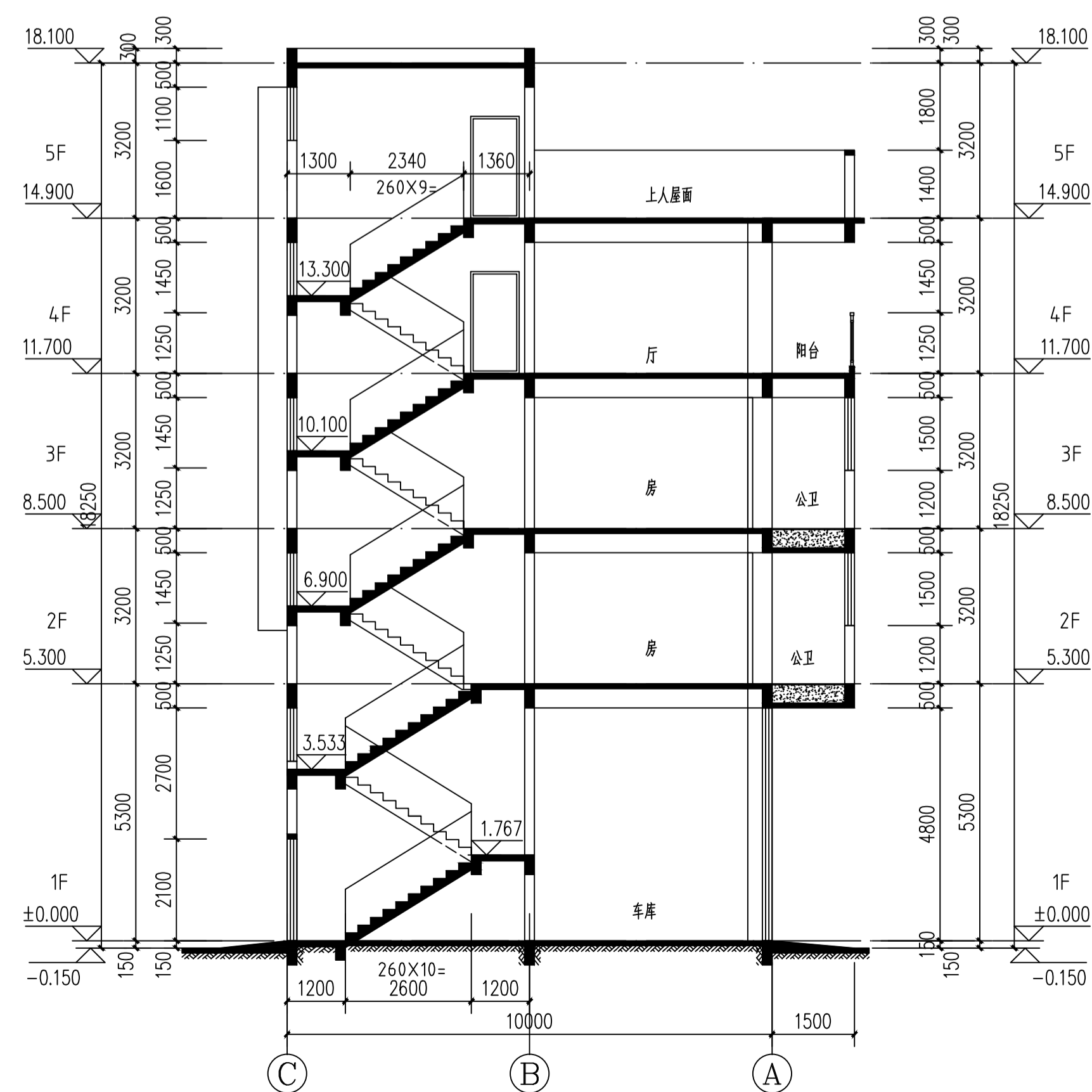
五层平面图 1:100  
本层建筑面积: 26.07m<sup>2</sup>



①-④轴立面图 1:100



④-①轴立面图 1:100



1-1剖面图 1:100